

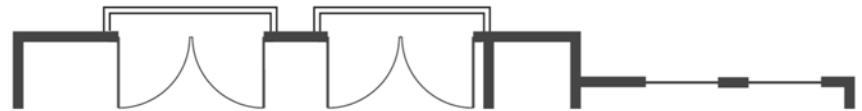
T H E F I T Z G E R A L D

2 Bedrooms

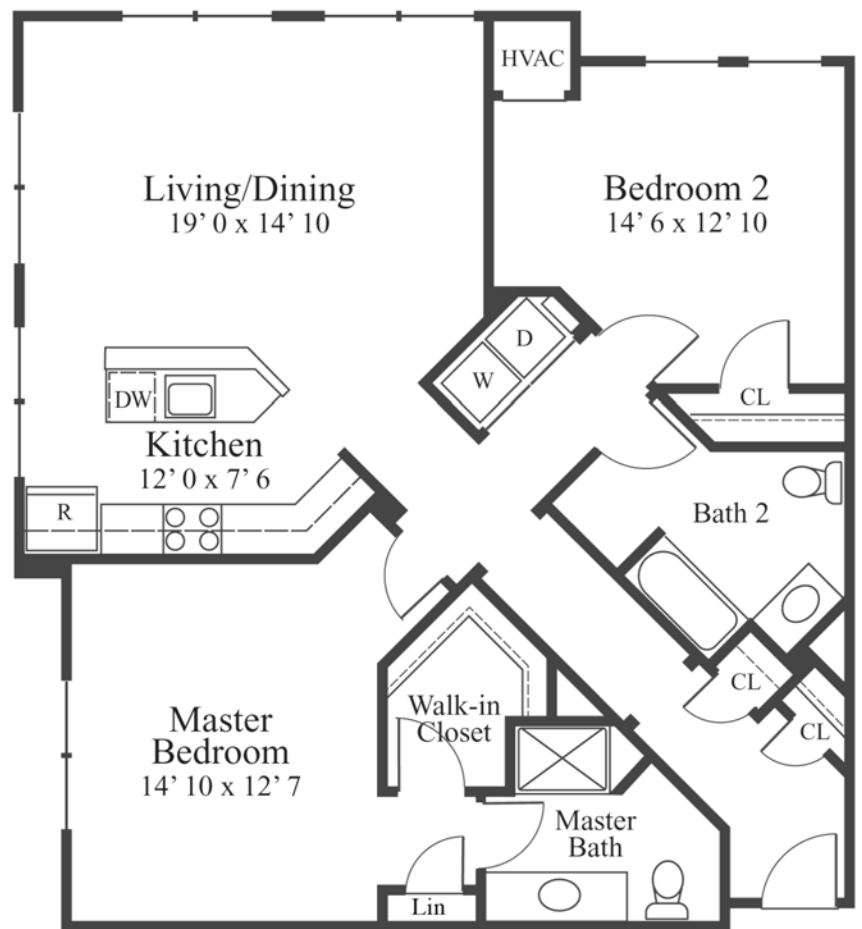
Features

- 1,270 Square Feet
- 2 Large Bedrooms
- 2 Full Baths
- Living/Dining Area
- Designer Kitchen
- Granite Countertops & Bar-style Serving Counter
- Full Size Washer & Dryer
- Walk-in Closet in Master Bedroom
- Inswing French Doors on Balconettes
- 9-Foot Ceilings
- Distinctive Corner Location; Light & Views on 2 Sides

With Balconettes



B 2 b b



B 2 + B 2 p



Irving Street, Rahway, NJ
ParkSquareOnline.com

Floor plan and dimensions are approximate and subject to field variation. We reserve the right to make modifications in design, terms and products without notice or obligation. © 2008 Landmark at Rahway LLC 05.08.08

